



1-800-657-4666

## Log Siding J Block

Two sizes with pre-cut openings make installation of electrical outlets, light fixtures, dryer vents easier.

1 7/16 inch thick J block works well for 2 x 6 or 2 x 8 siding profiles.  
2 1/4 inch thick J block designed for use with our thicker profiles.  
Available in kiln-dried white pine or air-dried western red cedar.

### Outlet J Block 4 3/4" x 7"



Also available: Double and Triples for 2 and 3 gang boxes.

Vendor Part Number

Pine 1-7/16" Outlet

9900000004 - Single

99000000042 - Double

99000000043 - Triple

Pine 1-7/16" Fixture

9900000005

Pine 2-1/4" Outlet

9900000006 - Single

99000000062 - Double

99000000063 - Triple

Pine 2-1/4" Fixture

9900000007

Cedar 1-7/16" Outlet

99000000041 - Single

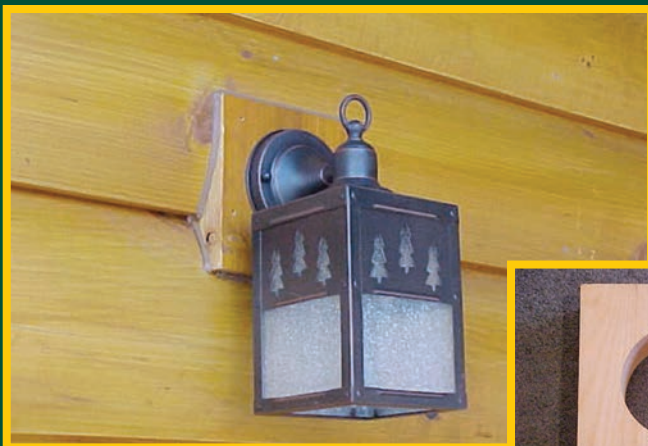
99000000044 - Double

99000000045 - Triple

Cedar 1-7/16" Fixture

99000000051

### Fixture J Block 7" x 7"





## Log Mantels



**Air Dried White Pine  
Full Round 9" diameter notched support arms  
Planed mantel log shelf**

**Available in 6' and 8' lengths.**

Vendor Part Number  
3010400601  
3010400801

**This is a raw log product that may require sanding prior to finishing. Mantel shelf and supports may develop cracks and checks which enhance its rustic appearance.**



## LOG MANTEL INSTALLATION

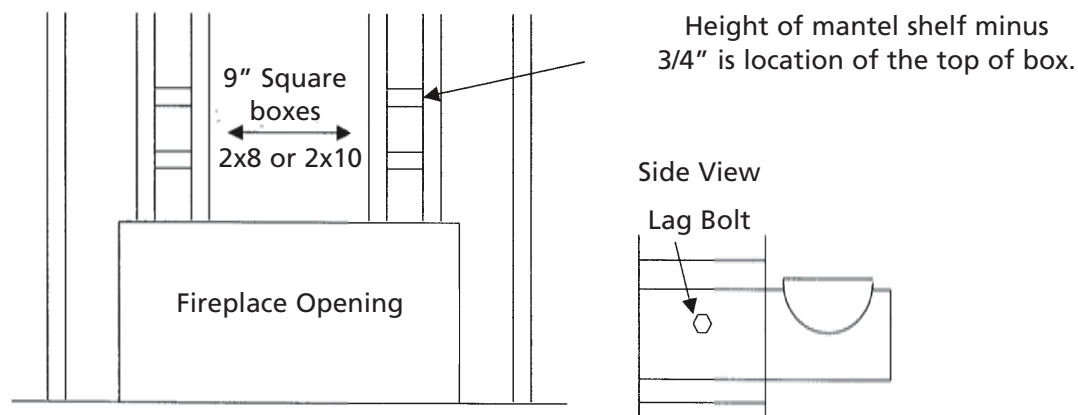
Parts: One six foot long full round log with two saddle notches at opposite ends. This will become the support arms for your mantel. One half log mantel shelf.

You will also need 4 – four inch lag screws, not provided.

**Instructions:** Determine what you want to be the height of your mantel shelf. Subtract  $\frac{3}{4}$  of an inch from that overall height. This will be the location of the top of two boxes you need to construct inside the chimney chase (see sketch). Construct two boxes in the framework of your chimney using 2 x 8 or 2 x 10 lumber that are nine inch square, inside dimension (see sketch). The two boxes should be located in the area you want the support arms of your mantel to protrude away from your fireplace.

Once the 9 inch (inside measurement) square boxes are complete, determine how far out you want the support arms to extend. Don't forget to leave room for any plywood, rock or stone you may be adding. The saddle notch on the arm needs to be located away from any possible contact with stone or rock so your mantel shelf will sit in the support arms. Cut the support arm piece in half or as necessary. Insert the arms into the nine inch boxes with the **saddle notch facing up**. Make sure arms are level and plumb, shim as necessary. Using 4 inch or larger lag screws (not provided), lag into the support arms through the sides of your 9 inch box from both sides. Pre-drilling the holes will avoid splitting the log. Set the half log shelf in place.

**Important Notes:** Due to a wide variety of construction materials and applications, these installation instructions are meant to serve as a guide. Final results depend on the installer. All log products are air-dried and naturally develop cracks or checks, which are unavoidable and enhance their rustic appeal. This is a raw log product and will require sanding before finishing. When finishing your mantel, use a breathable finish. Avoid sealers like varnish or polyurethane.



For further assistance call 1-800-657-4666 Mon. – Fri: 7:30 am – 4:30 pm.

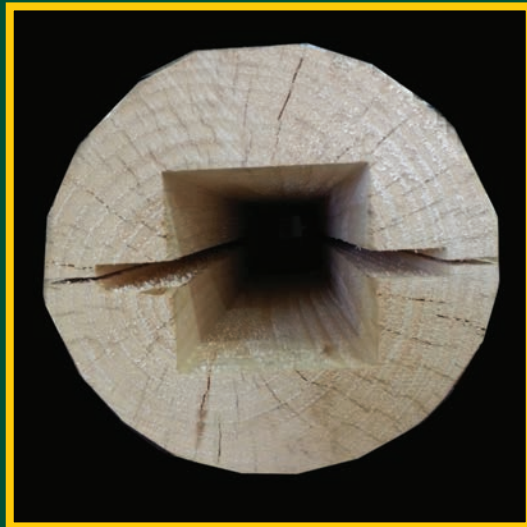


## Log Post Wraps

Used to wrap basement posts, porch posts, beams and more.

### **Specifications:**

One 9" white pine log cut in half.  
4" x 4" area hollowed out inside.  
Will wrap a standard size jack post.  
Available in 8', 10' and 12' lengths.  
Cut to finished length then screw  
halves together to install.  
Fasteners not included.



This is a raw log product and may require sanding and/or finishing.

Product is air-dried and may develop unavoidable checks or cracks as it dries.

Vendor Part Number

Smooth

3010100912-08

3010100912-10

3010100912-12

Hewn

3010100912-08H

3010100912-10H

3010100912-12H



## White Pine Countertops



Countertop thickness is just under 3".  
Natural Edge on both sides.  
Widths can vary from 17"-21" on the same piece.  
Kiln dried for use as bar tops or fireplace mantels.  
Lengths of 8', 10', and 12'.

Vendor Part Number  
3030000001-08  
3030000001-10  
3030000001-12

Natural edge on both sides.



Also available:

25" Kitchen Top with square back and natural front in lengths of 8' and 12'.  
36" and 42" wide Island Tops with natural edge on both sides in 8' lengths only.



1-800-657-4666

## Log Beams

for Basements, Great Rooms, Lofts, Porches, and More.

### 9" Full Round Logs

Air-Dried Wisconsin White Pine  
Available in Even Lengths  
8' to 16' long.

Weight: Approx. 15 lbs/ft

Vendor Part Number

Pine Round Log	Hewn
3010100921-08	3010100921-08H
3010100921-10	3010100921-10H
3010100921-12	3010100921-12H
3010100921-14	3010100921-14H
3010100921-16	3010100921-16H



### Half Log Beams

Air-Dried Wisconsin White Pine  
Available in Even Lengths  
8' to 16' long.

Weight: Approx. 8 lbs/ft.

Vendor Part Number

Pine Half Log	Hewn
3010214901-08	3010214901-08H
3010214901-10	3010214901-10H
3010214901-12	3010214901-12H
3010214901-14	3010214901-14H
3010214901-16	3010214901-16H

Longer Lengths Available up to 24 feet for an upcharge.

Check with Structural Engineer before installation of beams.

Raw Log Products may develop unavoidable cracks when drying.



## Timber Beams

for Basements, Great Rooms, Lofts, Porches, and More.

9" x 9", 4.5" x 9", 4.5" x 4.5"

### Rough Sawn Timbers

Air-Dried Wisconsin White Pine

Available in Even Lengths

8' to 16' long.



Vendor Part Number

9"x9" Timber

3010309901-08

3010309901-10

3010309901-12

3010309901-14

3010309901-16

4.5"x9" Timber

3010300501-08

3010300501-10

3010300501-12

3010300501-14

3010300501-16

4.5"x4.5" Timber

3010300301-08

3010300301-10

3010300301-12

3010300301-14

3010300301-16

Longer Lengths Available up to 24 feet for an upcharge. Check with Structural Engineer before installation of beams. Raw Products may develop unavoidable cracks when drying.



Custom size timbers and hand hewing also available.



## Full Log Shed Porches



9 Inch Full Log

- King post notched log for support posts
- Full log header
- Saddle Notched log rafters
- 2 x 6 T&G decking



King Notch



Saddle Notch





# LOG SIDING

## Meadow Valley Shed Porch

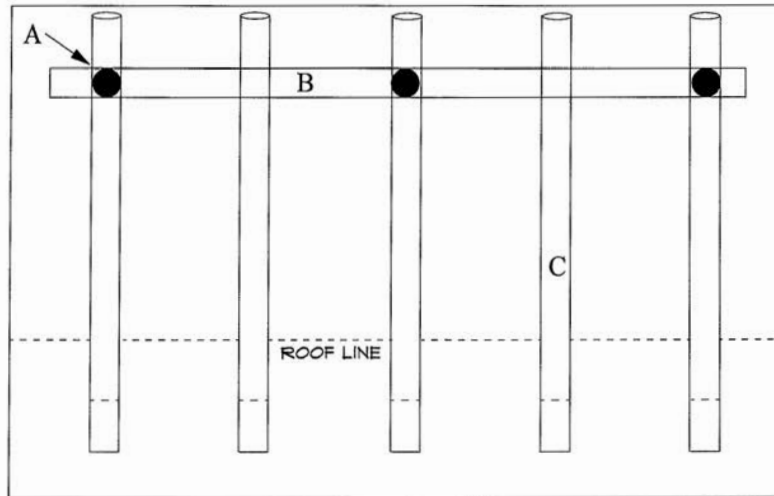
Contact Name: \_\_\_\_\_

Job Name: \_\_\_\_\_

Number: \_\_\_\_\_

Store Location: \_\_\_\_\_

Return Fax #: \_\_\_\_\_



Roof Pitch: \_\_\_\_\_ Deck Depth: \_\_\_\_\_ Deck Length: \_\_\_\_\_

**IMPORTANT NOTES:** Porches are not assembled. Site angle cutting to match roof line and assembly are necessary. Fasteners not included. Materials only, contractor needs to verify material list, log lengths, and check local codes. Log Supports for header are recommended every ten feet. No logs available over 24'. Extended lead time necessary for 20', 22' and 24' long logs. Log Rafters 4' O.C. or less. The longer the span the closer the rafters.

Quantity	Length	Description
		A. Porch Supports - 9" full round with King Notch on one end
		B. Porch Header - 9" full round log
		C. Log Rafters - 9" full round log - Saddle Notch cut - 16" tails

2 x 6 Tongue and Groove needed for roof? \_\_\_\_\_ Lineal feet.

\* Please send drawing if shed porch is more complex.

**Fax sheet to: 608-378-4199**

Please call 800-657-4666 for additional information.



1-800-657-4666

## Full Log Trusses



- Available in 9" Round Logs or Rough Sawn Timbers
  - White Pine Logs – Air Dried
  - 28-foot maximum width at 10/12 pitch
  - On Site Cutting and Assembly Required
    - Fasteners Not Included
- Logs may develop unavoidable cracks or checks as they dry
- Logs and Timbers used for trusses are raw log products



# Meadow Valley

## LOG SIDING

### Meadow Valley Log Truss

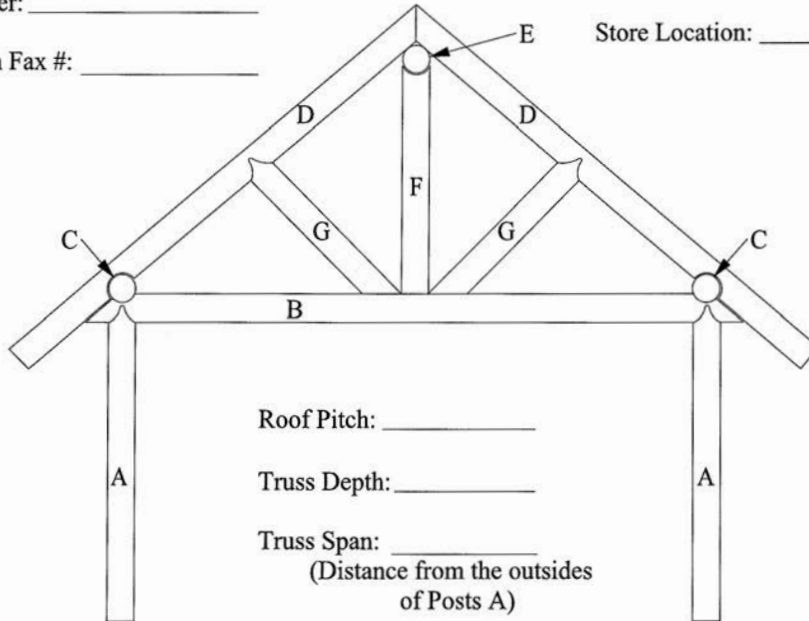
Contact Name: \_\_\_\_\_

Job Name: \_\_\_\_\_

Number: \_\_\_\_\_

Store Location: \_\_\_\_\_

Return Fax #: \_\_\_\_\_



Roof Pitch: \_\_\_\_\_

Truss Depth: \_\_\_\_\_

Truss Span: \_\_\_\_\_  
(Distance from the outsides of Posts A)

**IMPORTANT NOTES:** Trusses are not assembled. Site cutting/notching and assembly are necessary. Fasteners not included. Materials only, contractor needs to verify material list, log lengths, and check local codes. Log Supports for header are recommended every twelve feet. No logs available over 24'. Extended lead time necessary for 20' 22' and 24' long logs. If not using hanger brackets to attach Truss to structure than beam pockets or rafters will be needed.

Quantity	Length	Description
		A. Truss Supports - 9" full round with King Notch on one end
1		B. Truss Header - 9" full round log
2		C. Eave Beam Logs - 9" full round logs - Saddle Notch cut - 8" tails
2		D. Log Rafters - 9" full round logs - Saddle Notch cut - 24" tails
1		E. Ridge Beam Log - 9" full round log
1		F. Ridge Support Log - 9" full round log with King Notch one end
2		G. Webbing Logs - 9" full round logs with King Notch on one end

3-9" Beam Hanger Brackets needed for attaching to structure? \_\_\_\_\_

2 x 6 Tongue and Groove needed for roof? \_\_\_\_\_ Lineal feet.

**Fax sheet to: 608-378-4199**

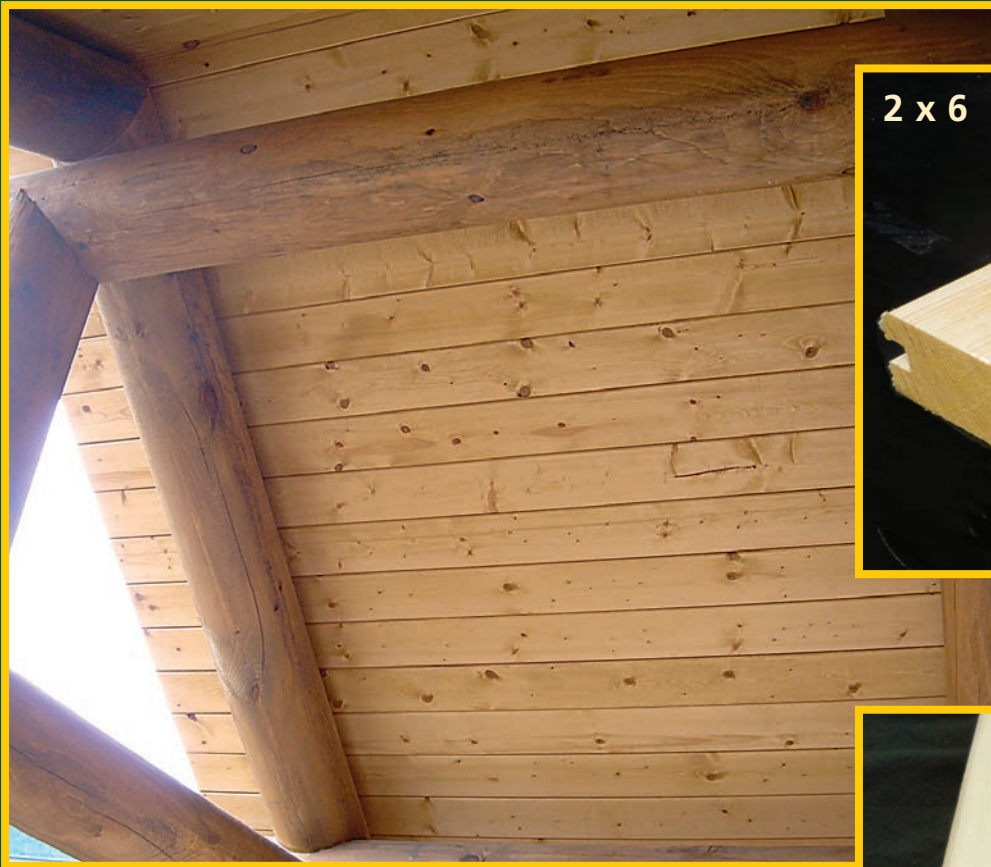
Please call 800-657-4666 for additional information.





1-800-657-4666

## 2 x 6 Decking/Planking Tongue and Groove



2 x 8 Tongue and Groove  
Also Available







## 2 x 6 Decking/Planking

### Species

Kiln-dried Spruce  
Air-dried Western Red Cedar

**Coverage** 4-7/8 inch

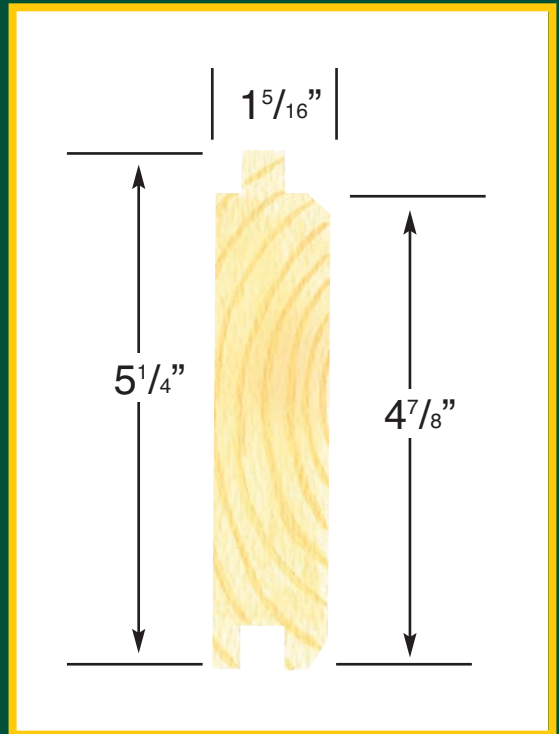
**Lineal Feet Per 100 Square Feet** 250

**Conversion Factor** .40 square feet =1 lineal foot

**Lengths** 12', 16'

**Fasteners** Flooring Nail

**Uses** Perfect for floors or Covered Porch Ceilings.  
Reversible.



### 2 x 6 Decking/Planking

Vendor Part Number

Spruce  
1010312602-08  
1010312602-12  
1010312602-16

Cedar  
2010312602-12  
2010312602-16



## 2 x 8 Decking/Planking

### Species

Kiln-dried Spruce  
Air-dried Western Red Cedar

**Coverage** 6-7/8 inch

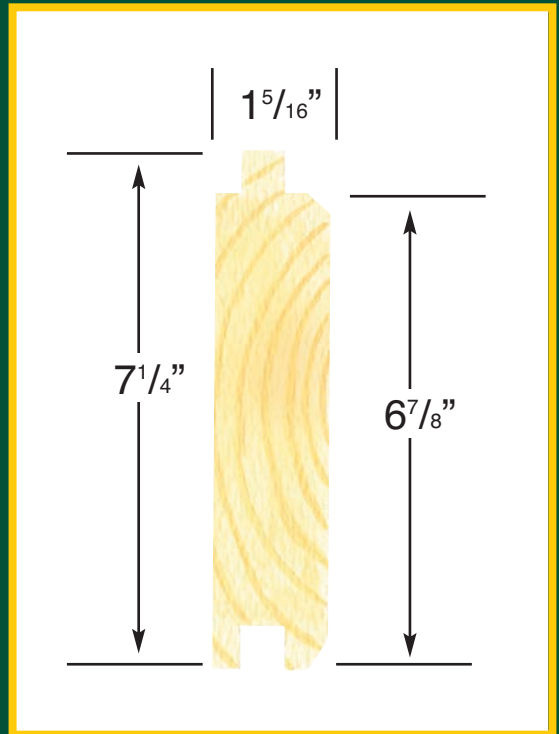
**Lineal Feet  
Per 100  
Square Feet** 176

**Conversion  
Factor** .57 square feet  
=1 lineal foot

**Lengths** 12', 16'

**Fasteners** Flooring Nail

**Uses** Perfect for floors  
or Covered Porch  
Ceilings.  
Reversible.



### 2 x 8 Decking/Planking

Vendor Part Number

Spruce  
1010312802-12  
1010312802-16

Cedar  
2010312802-12  
2010312802-16



## Decorative Pine Tree Shutters



**ROUGH SAWN CEDAR FRAME**  
**GREEN VINYL BACKGROUND**  
Approximately 12" wide.  
Lengths Available:  
36" 48" 60"

Vendor Part Number  
0300000003  
0300000004  
0300000005



1-800-657-4666

# Log Home/Log Siding Hardware

**Coped Tie Beam Strap**



**Log Screws**



**4.5x9 Hanger Bracket**



**Hanger Bracket**



**Flat Tie Beam Strap**



**9" Round Hanger Bracket**

Vendor Part Number	
4.5" x 9" Hanger Bracket	0990050404
9" Hanger Bracket	0990050904
Flat 6" Tie Beam Strap	0990090614
Coped 6' Tie Beam Strap	0990090604
6" Log Screws	0990010604
8" Log Screws	0990010804
10" Log Screws	0990011004
12" Log Screws	0990011204

**Screw Size:**  
6" Log Screws

8" Log Screws

10" Log Screws

12" Log Screws

**Screws Used for:**  
Half Log Siding screw  
into every stud

Stair Treads

Half Log Siding screw  
every 3-4 feet vertically  
into one another

Timber and Logs  
every 2-3 feet