



LOG BENCHES AND TABLES



Campfire Log Benches

Shipped Knocked Down

Assembles in Minutes

White Pine Seat

White Cedar Legs

Pre-drilled Holes for Assembly

Lengths Available: 4, 6, & 8 Foot

Vendor Part Numbers:

0120000004, 0120000006, 0120000008

Log Benches With Back

Shipped Knocked Down

Assembles in Minutes

White Pine Seat

White Cedar Legs and Back

Pre-drilled Holes for Assembly

Lengths Available: 4, 6, & 8 Foot

Vendor Part Numbers:

0110000004, 0110000006, 0110000008



Log Picnic Tables

White Pine 9" Logs – Air Dried

All Logs pre-notched ready for assembly.

Fasteners and Assembly Guide Included.

Sizes Available:

6 foot, 8 foot, 10 foot

Vendor Part Numbers:

0100000006, 0100000008, 0100000010



Full Log Picnic Shelters



4 Sizes Available:

8 x 16, 12 x 16, 16 x 16, 16 x 20

Foundation not included.

Site Cutting and Assembly Required.

Construction Prints and Assembly Instructions Included.



LOG SIDING

Meadow Valley Picnic Shelter

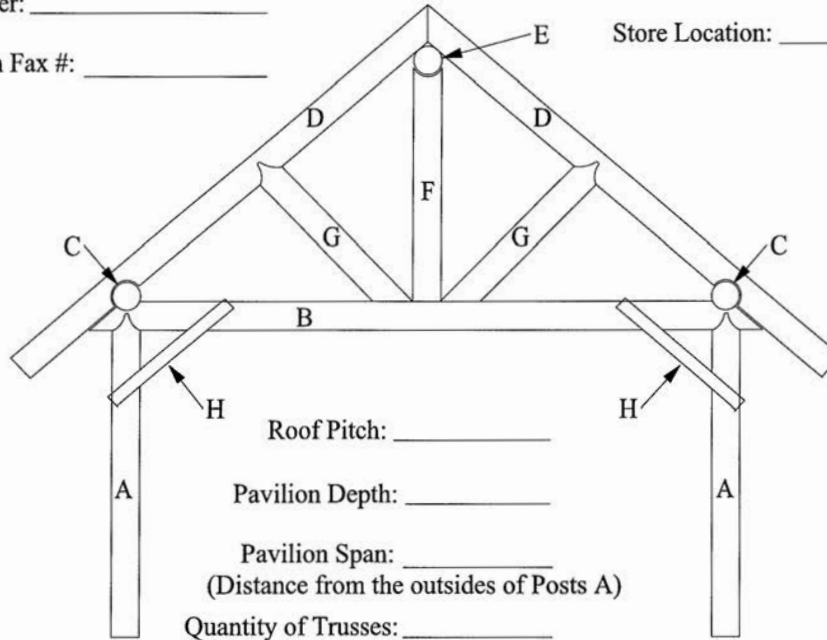
Contact Name: _____

Job Name: _____

Number: _____

Store Location: _____

Return Fax #: _____



IMPORTANT NOTES: Trusses are not assembled. Site cutting/notching and assembly are necessary. Fasteners not included. Materials only, contractor needs to verify material list, log lengths, and check local codes. Log Supports for header are recommended every twelve feet. No logs available over 24'. Extended lead time necessary for 20' 22' and 24' long logs.

Quantity	Length	Description
		A. Truss Supports - 9" full round with King Notch on one end
		B. Truss Header - 9" full round log
		C. Eave Beam Logs - 9" full round logs - Saddle Notch cut - 12" tails and notched per spacing of post: _____
		D. Log Rafters - 9" full round logs - Saddle Notch cut - 24" tails
		E. Ridge Beam Log - 9" full round log
		F. Ridge Support Log - 9" full round log with King Notch both ends perpendicular give length: _____
		G. Webbing Logs - 9" full round logs with King Notch on one end
		H. Bracing - 2 1/4"x4"x4' Hewned Trim Brace 3 per post

Quantity of Log Railing needed: _____

2 x 6 Tongue and Groove needed for roof? _____

Fax sheet to: 608-378-4199

Please call 800-657-4666 for additional information.



LOG SIDING PROJECTS

Log Sided Playhouse



Log Sided Deer Stands



Log Sided Storage Shed



Log Sided Sauna



Call for plans and material lists



Log Theme Rooms



LOG THEME ROOMS:

Let Meadow Valley assist you in designing a log theme room. Whether it's a basement, great room, bathroom, or bedroom, our expert designers can help incorporate log accessories into your space. No matter where you live, a log theme room can bring that Northwoods Atmosphere into your home, creating a warm, inviting, relaxing environment.

For more ideas and photos of Log Theme Rooms check out the photo gallery on our website:
www.log-siding.com



Do-It-Yourself Cabin Kits

3-1/2 x 9 Timbers, Butt & Pass Corners

Sizes Available:

12 x 12 Cabin Kit, 12 x 20 Cabin Kit, 16 x 24 Cabin Kit
(Dimensions are Cabin Size)

**With the 6' Front Porch & Sleeping Loft/Storage above
the overall cabin footprints are 6' longer!**



Features

Full Log Construction
Detailed Plans
Toll-free Telephone Support
Sleeping Loft Above Porch
Vaulted Ceiling Throughout
Complete Material Package
with help from lumberyard

Kit Includes

Log Walls: 3-1/2" x 9" White Pine timbers with beveled edges and Butt & Pass corners, also includes porch posts and tie beams with step-by-step installation instructions.

Hardware: All screws, between-the-row sealant, and joint dowels needed for log construction.

Sealant: Exterior Stain and Chinking with your choice of colors. Also includes chinking gun and follow plate.

Item Description	Vendor Part Number
12 x 12 Log Cabin Kit	0200001212
12 x 20 Log Cabin Kit	0200001220
16 x 24 Log Cabin Kit	0200001624