

Two sizes with pre-cut openings make installation of electrical outlets, light fixtures, dryer vents easier.

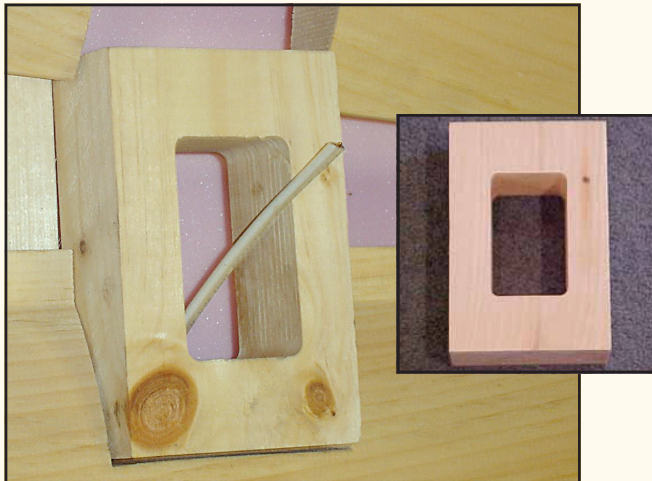
1 7/16 inch thick J block works well for 2 x 6 or 2 x 8 siding profiles.

2 1/4 inch thick J block is designed for use with our thicker profiles.

Available in kiln-dried white pine or air-dried western red cedar.

Outlet J Block 4 3/4" x 7"

(2 1/2" x 3 7/8" Opening)



Double Outlet J Block 7" x 7"

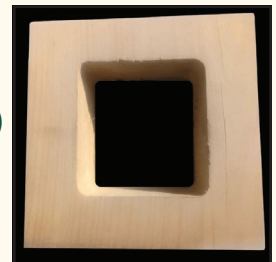
(4 1/8" x 3 7/8" Opening)

Triple Outlet J Block 9" x 7"

(6" x 3 7/8" Opening)

Quad Outlet J Block 11" x 7"

(7 3/4" x 3 7/8" Opening)



Fixture J Block 7" x 7"

(4" Diameter Opening)



SPF 1 7/16"	VENDOR PART NUMBER
SINGLE OUTLET	99000000004
DOUBLE OUTLET	990000000042
TRIPLE OUTLET	990000000043
QUAD OUTLET	990000000046
FIXTURE	99000000005

PINE 2 1/4"	VENDOR PART NUMBER
SINGLE OUTLET	99000000006
DOUBLE OUTLET	990000000062
TRIPLE OUTLET	990000000063
QUAD OUTLET	990000000066
FIXTURE	99000000007

CEDAR 1 7/16"	VENDOR PART NUMBER
SINGLE OUTLET	990000000041
DOUBLE OUTLET	990000000044
TRIPLE OUTLET	990000000045
FIXTURE	990000000051

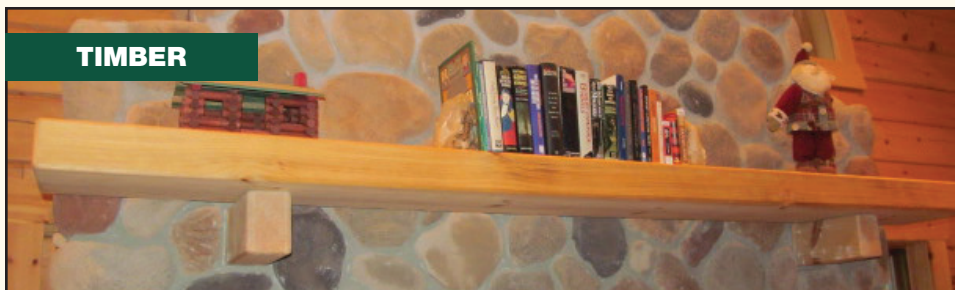
MANTEL SETS



1-800-657-4666



9" Planed mantel LOG shelf with Full Round 9" diameter notched support arms



Timber Mantel:

4" or 6" thick x 12" deep

With two 6" x 8" x 30" Support Arms

Rough Sawn or Hewn texture.



Natural Edge Mantel:

3 1/2" or 5 1/2" thick x 10-12" deep (depth varies per piece) with two 6" x 8" x 30" Support Arms.

Face will have a peeled texture.

Air Dried White Pine—8' Long

This is a raw log product that may require sanding prior to finishing. Mantel shelf and supports may develop cracks and checks which enhance its rustic appearance.

DESCRIPTION	VENDOR PART NUMBER
LOG	3010400801
4" ROUGH SAWN	3010400841
4" HEWN	3010400842
6" ROUGH SAWN	3010400861
6" HEWN	3010400862
3-1/2" NATURAL	3010400843
3-1/2" NATURAL	3010400863



LOG MANTEL INSTALLATION

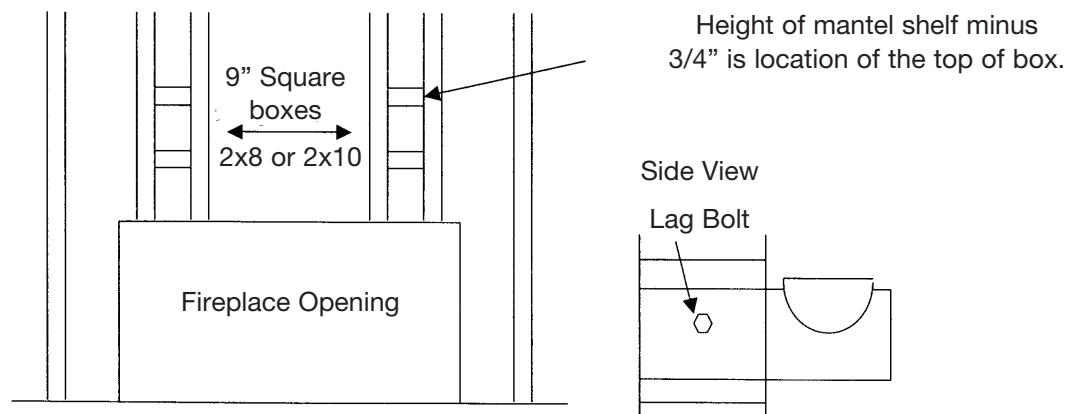
Parts: One six foot long full round log with two saddle notches at opposite ends. This will become the support arms for your mantel. One half log mantel shelf.

You will also need 4 – four inch lag screws, not provided.

Instructions: Determine what you want to be the height of your mantel shelf. Subtract $\frac{3}{4}$ of an inch from that overall height. This will be the location of the top of two boxes you need to construct inside the chimney chase (see sketch). Construct two boxes in the framework of your chimney using 2 x 8 or 2 x 10 lumber that are nine inch square, inside dimension (see sketch). The two boxes should be located in the area you want the support arms of your mantel to protrude away from your fireplace.

Once the 9 inch (inside measurement) square boxes are complete, determine how far out you want the support arms to extend. Don't forget to leave room for any plywood, rock or stone you may be adding. The saddle notch on the arm needs to be located away from any possible contact with stone or rock so your mantel shelf will sit in the support arms. Cut the support arm piece in half or as necessary. Insert the arms into the nine inch boxes with the **saddle notch facing up**. Make sure arms are level and plumb, shim as necessary. Using 4 inch or larger lag screws (not provided), lag into the support arms through the sides of your 9 inch box from both sides. Pre-drilling the holes will avoid splitting the log. Set the half log shelf in place.

Important Notes: Due to a wide variety of construction materials and applications, these installation instructions are meant to serve as a guide. Final results depend on the installer. All log products are air-dried and naturally develop cracks or checks, which are unavoidable and enhance their rustic appeal. This is a raw log product and will require sanding before finishing. When finishing your mantel, use a breathable finish. Avoid sealers like varnish or polyurethane.



For further assistance call 1-800-657-4666 Mon. – Fri: 7:30 am – 4:30 pm.

LOG POST WRAPS

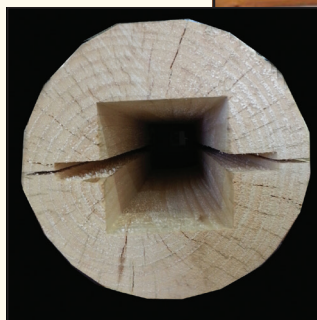


USED TO WRAP BASEMENT POSTS, PORCH POSTS, BEAMS AND MORE.

2-PIECE LOG SPECIFICATIONS:

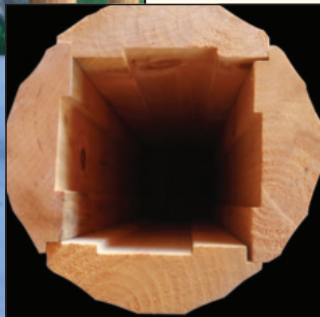
One 9" white pine log cut in half. **4" x 4" area** hollowed out inside. Will wrap a standard size jack post. Available in 8', 10' and 12' lengths. Cut to finished length then screw halves together to install. Fasteners not included.

This is a raw log product and may require sanding and/or finishing. Product is air-dried and may develop unavoidable checks or cracks as it dries.



4-PIECE SIDING SPECIFICATIONS:

Kiln Dried Hewn White Pine
Creates **6" x 6" Opening**
Available in 8', 10', 12' Lengths
Fasteners not included



DESCRIPTION	VENDOR PART NUMBER
2 PC SMOOTH	3010100912-08, -10, -12
2 PC HAND HEWN	3010100912-08H, -10H, -12H
4 PC HAND HEWN	3010100913-08H, -10H, -12H



NATURAL EDGE ON BOTH SIDES

Countertop thickness is just under 3".

Natural Edge one side is also available.

Widths can vary from 18"-25" on the same piece.

Kiln dried for use as bar tops, shelves, mantels or furniture.

Lengths of 8', 10', and 12'.

Also Available:

25" Kitchen Top with square back and natural front in lengths of 8' and 12'.

36" and 42" wide Island Tops with natural edge on both sides in 8' lengths only.

Widths will vary per piece.



Cupping and twisting possible;
immediate installation recommended.

ITEM	VENDOR PART NUMBER
PINE BAR TOP	3030000001-08, -10, -12

LOG BEAMS

9" AND 7 3/4"



FOR BASEMENTS, GREAT ROOMS, LOFTS, PORCHES AND MORE.

Air-Dried Wisconsin White Pine
Available in Even Lengths 8' to 16' long.

FULL ROUND LOGS

Weight: Approx. 15 lbs/ft

DESCRIPTION	VENDOR PART NUMBER
9" FULL SMOOTH	3010100921-08, -10, 12, -14, -16
9" FULL HAND HEWN	3010100921-08H, -10H, 12H, -14H, -16H
7" FULL SMOOTH	3010500808-10, 12, -14, -16
7" FULL HAND HEWN	3010500808H-10H, 12H, -14H, -16H



HALF LOG BEAMS

Weight: Approx. 8 lbs/ft

DESCRIPTION	VENDOR PART NUMBER
9" HALF SMOOTH	3010214901-08, -10, -12, 14, -16
9" HALF HAND HEWN	3010214901-08H, -10H, -12H, -14H, -16H
7" HALF SMOOTH	3010500908-10, -12, 14, -16
7" HALF HAND HEWN	3010500908-10H, -12H, -14H, -16H



Additional Lengths Available (4'-24'); contact us for pricing. Also available in Western Red Cedar.
Check with a Structural Engineer before installation of beams.
Raw Log Products may develop unavoidable cracks when drying.



TIMBER BEAMS

FOR BASEMENTS, GREAT ROOMS, LOFTS, PORCHES, MANTELS AND MORE.

ROUGH SAWN	VENDOR PART NUMBER
4 1/2 X 9	3010300501-08, -10, -12, -14, -16
6 X 6	3010306801-08, -10, -12, -14, -16
8 X 8	3010308800-08, -10, -12, -14, -16
9 X 9	3010309901-08, -10, -12, -14, -16
10 X 10	3010309902-08, -10, -12, -14, -16
12 X 12	3010309904-08, -10, -12, -14, -16

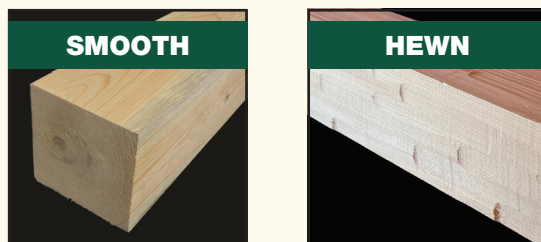


Additional Lengths are Available (4'-24');
contact us for pricing. Check with a Structural
Engineer before installation of beams.
Raw Timber Products may develop
unavoidable cracks when drying.

Air-Dried Wisconsin White Pine
Available in Even Lengths 8' to 16' long.



SMOOTH	VENDOR PART NUMBER
6 X 6	3010306801-08S, -10S, -12S, -14S, -16S
8 X 8	3010308800-08S, -10S, -12S, -14S, -16S



RUSTIC HEWN	VENDOR PART NUMBER
4 1/2 X 9	3010300501-08H, -10H, -12H, -14H, -16H
6 X 6	3010306801-08H, -10H, -12H, -14H, -16H
8 X 8	3010308800-08H, -10H, -12H, -14H, -16H
9 X 9	3010309901-08H, -10H, -12H, -14H, -16H
10 X 10	3010309902-08H, -10H, -12H, -14H, -16H
12 X 12	3010309904-08H, -10H, -12H, -14H, -16H

**Custom size timbers and
western red cedar also available.**

FULL LOG SHED PORCHES



- King post notched log for support posts
- Full log header
- Saddle Notched log rafters
- 2x6, 2x8, 3x6, or 3-1/2x9 T&G decking





LOG SIDING

SHED PORCH

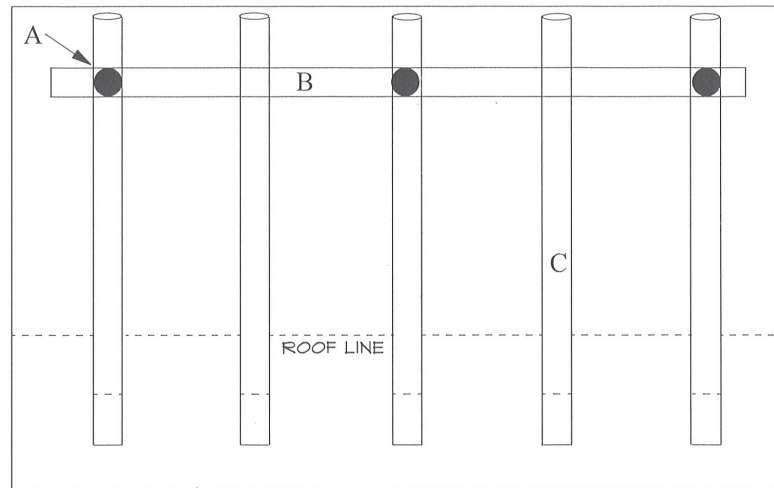
Contact Name: _____

Job Name: _____

Number: _____

Store Location: _____

Return Email: _____



Roof Pitch: _____ Deck Depth: _____ Deck Length: _____

IMPORTANT NOTES: Porches are not assembled. Site angle cutting to match roof line and assembly are necessary. Fasteners not included. Materials only, contractor needs to verify material list, log lengths, and check local codes. Log Supports for header are recommended every ten feet. No logs available over 24'. Extended lead time necessary for 20', 22' and 24' long logs. Log Rafters 4' O.C. or less. The longer the span the closer the rafters.

Quantity	Length	Description
		A. Porch Supports - 9" full round with King Notch on one end
		B. Porch Header - 9" full round log
		C. Log Rafters - 9" full round log - Saddle Notch cut - 16" tails

Tongue and Groove needed for roof? _____ square feet.

* Please send drawing if shed porch is more complex.

Email sheet to: info@log-siding.com.

Please call 800-657-4666 for additional information.

LOG AND TIMBER TRUSSES



- Available in 9" Round Logs or Rough Sawn Timbers
- White Pine Logs – Air Dried
- 28-foot maximum width at 10/12 pitch
- Log header supports are recommended every 12'
- On Site Cutting and Assembly Required
- Fasteners Not Included
- Logs may develop unavoidable cracks or checks as they dry
- Logs and Timbers used for trusses are raw log products





LOG TRUSS

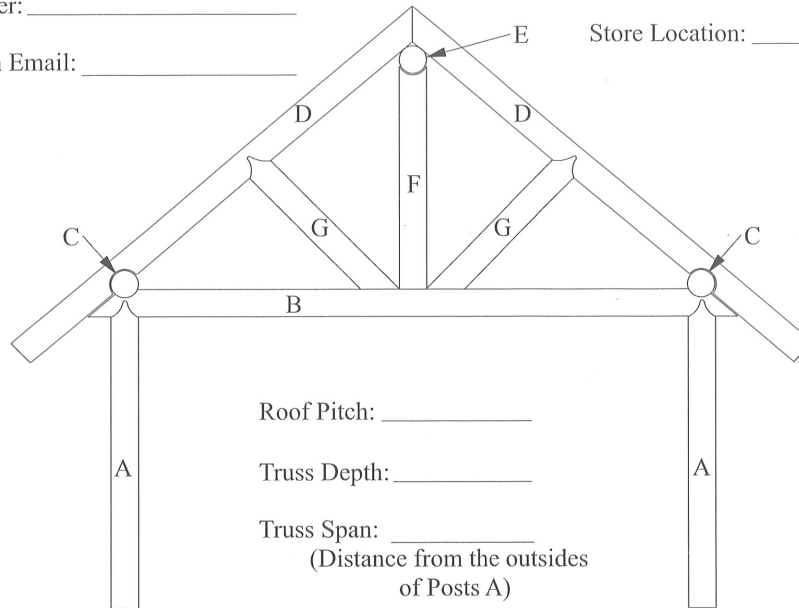
Contact Name: _____

Job Name: _____

Number: _____

Store Location: _____

Return Email: _____



Roof Pitch: _____

Truss Depth: _____

Truss Span: _____
(Distance from the outsides
of Posts A)

IMPORTANT NOTES: Trusses are not assembled. Site cutting/notching and assembly are necessary. Fasteners not included. Materials only, contractor needs to verify material list, log lengths, and check local codes. Log Supports for header are recommended every twelve feet. No logs available over 24'. Extended lead time necessary for 20' 22' and 24' long logs. If not using hanger brackets to attach Truss to structure than beam pockets or rafters will be needed.

Quantity	Length	Description
		A. Truss Supports - 9" full round with King Notch on one end
1		B. Truss Header - 9" full round log
2		C. Eave Beam Logs - 9" full round logs - Saddle Notch cut - 8" tails
2		D. Log Rafters - 9" full round logs - Saddle Notch cut - 24" tails
1		E. Ridge Beam Log - 9" full round log
1		F. Ridge Support Log - 9" full round log with King Notch one end
2		G. Webbing Logs - 9" full round logs with King Notch on one end

3- 9" Beam Hanger Brackets needed for attaching to structure? _____

Tongue and Groove needed for roof? _____ square feet.

Email sheet to: info@log-siding.com.

Please call 800-657-4666 for additional information.



TIMBER TRUSS

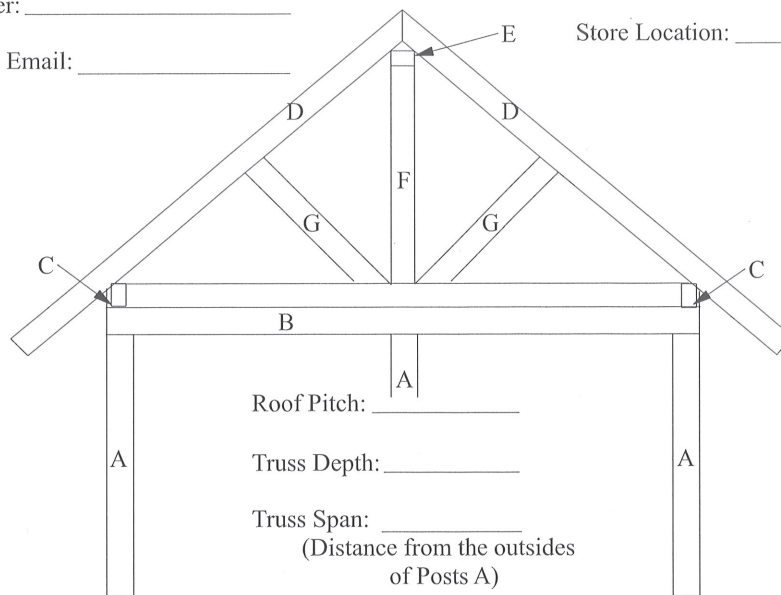
Contact Name: _____

Job Name: _____

Number: _____

Store Location: _____

Return Email: _____



IMPORTANT NOTES: Trusses are not assembled. Site cutting and assembly are necessary. Fasteners not included. Materials only, contractor needs to verify material list, log lengths, and check local codes. Log Supports for header are recommended every twelve feet. No Timbers available over 20'. Extended lead time necessary for 18' and 20' long Timbers. If not using hanger brackets to attach Truss to structure than beam pockets or rafters will be needed.

Quantity	Length	Description
		A. Truss Supports - Timber
1		B. Truss Header - Timber
2		C. Eave Beam - Timber
2		D. Log Rafters - Timber
1		E. Ridge Beam - Timber
1		F. Ridge Support - Timber
2		G. Webbing - Timber

3 - 4 1/2" X 9" Beam Hanger Brackets needed for attaching to structure? _____

Tongue and Groove needed for roof? _____ square feet.

Email sheet to: info@log-siding.com.

Please call 800-657-4666 for additional information.



1-800-657-4666

DECKING/PLANKING TONGUE & GROOVE



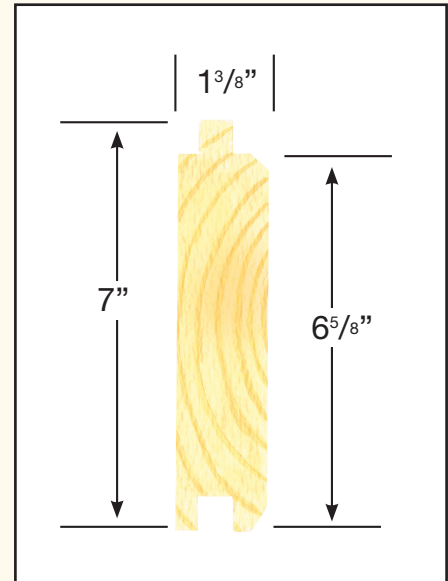
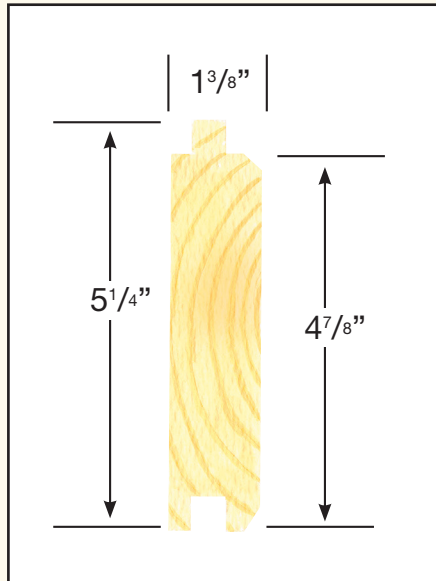
DECKING/PLANKING

2 X 6 AND 2 X 8



1-800-657-4666

Reversible. Perfect for Floors or Covered Porch Ceilings.



DESCRIPTION	VENDOR PART NUMBER
2 x 6 SPF	1010312602-08, -12, -16
2 x 6 CEDAR	2010312802-12, -16
2 X 8 SPF	1010312802-12, -16
2 x 8 CEDAR	2010312602-12, -16

DETAILS	2 X 6	2 X 8
Species	Kiln-dried SPF Air-dried Western Red Cedar	Kiln-dried SPF Air-dried Western Red Cedar
Coverage	4 7/8 inch	6 5/8 inch
Lineal Feet Per 100 Square Feet	250	182
Conversion Factor	.40 square feet =1 lineal foot	.55 square feet =1 lineal foot
Lengths	12', 16'	12', 16'
Fasteners	Flooring Nail	Flooring Nail

Product may contain wane. If Select is required call 1-800-657-4666 for further assistance.

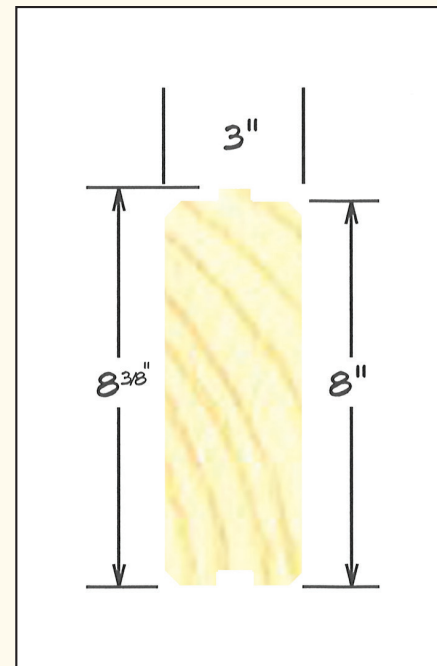
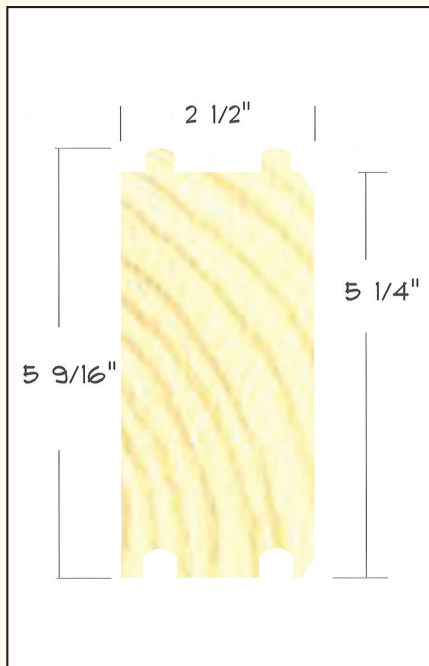


1-800-657-4666

DECKING/PLANKING

3 X 6 AND 3 1/2 X 9

Reversible. Perfect for Floors or Vaulted Ceilings.
3 1/2 x 9 is also suitable for small sheds, chicken coops, playhouses, hunting blinds and more.



DESCRIPTION	VENDOR PART NUMBER
3 x 6	3010034801-08, -12, -16
3.5 x 9	3010034802-08, -12, -16

DETAILS	3 X 6	3 1/2 X 9
Species	Kiln-dried White Pine	Kiln-dried White Pine
Coverage	5 1/4"	8 inch
Lineal Feet Per 100 Square Feet	234	152
Conversion Factor	.43 square feet =1 lineal foot	.66 square feet =1 lineal foot
Lengths	8', 12', 16'	8', 12', 16'
Fasteners	Timber Screws	Timber Screws

Product may contain wane. If Select is required call 1-800-657-4666 for further assistance.

DECORATIVE PINE TREE SHUTTERS



1-800-657-4666



ROUGH SAWN CEDAR FRAME GREEN ALUMINUM BACKGROUND

Approximately 12" wide.

LENGTHS	VENDOR PART NUMBER
3 FT	0300000003
4 FT	0300000004
5 FT	0300000005



1-800-657-4666

LOG HOME/LOG SIDING HARDWARE



ITEM	VENDOR PART NUMBER
4.5" x 9" Hanger Bracket	09900505045
9" Round Hanger Bracket	0990050904
Flat 6' Tie Beam Strap	0990090614
Coped 6' Tie Beam Strap	0990090604
6" Log Screws	0990010604
8" Log Screws	0990010804
10" Log Screws	0990011004
12" Log Screws	0990011204

Screw Size:

6" Log Screws

8" Log Screws

10" Log Screws

12" Log Screws

Screws Used for:

Half Log Siding screw into every stud

Stair Treads

Half Log Siding screw every 3-4 feet vertically into one another

Timber and Logs every 2 feet