



FINISHING AND PRE-FINISHING

PREFINISHING WITH PPG PROLUXE CETOL SRD RE:



- Elevate the innate beauty of wood surfaces while shielding against moisture, mildew, and harmful UV rays.
- Achieve coverage ranging from 125-200 square feet per gallon on new wood, and 200-300 square feet on previously stained wood.
- Available in four standard colors for versatility. Experience quality and longevity with just one coat in a climate-controlled setting.
- Embrace the benefits of a non-film forming, transparent, oil-based wood finish with a matte texture, ideal for logs, siding, and rails.



FINISHING INFORMATION



COLOR/TINT: Recommend starting with a lighter tint as the siding will get darker each time they re-stain. They can always go darker, but it is difficult to lighten up siding. Also recommend they use some pigment (if exterior) because the pigment offers protection from the sun. A natural or clear stain is better suited for interior use. If used on the exterior expect more frequent applications for a clear, transparent, or natural stain.

ORDERING PREFINISHED PRODUCT

All log siding products will be shipped unfinished unless ordered prefinished. The following log siding profiles can be ordered prefinished as well as window and door trim and corner pieces: 1 x 8, 2 x 6, 2 x 8, 3 x 8, and 2 1/2 x 10, 2 x 10, 3 x 10. Full Log products may not be prefinished.

IMPORTANT: We recommend mailing pre-finished samples to the customer or your store on the siding they are interested in purchasing. The reason for this is different species of wood accept a stain differently. Choosing the exact color off the siding minimizes error and disappointment.

There are no returns of prefinished product.

We Prefinish in 4 colors; one coat on front, one on back. It is applied in a climate-controlled environment to ensure the best results. Pre-finishing is an extra charge per lineal foot. We suggest ordering an extra gallon for touch ups. We do NOT pre-finish mantles, staircases, railing, or full log or timber products.

For exterior applications we recommend applying a maintenance coat (same color) on any prefinished products 6-12 months after installation to extend the life of the stain. The maintenance coat will ensure the siding is protected and extend the life of your stain.

STAINING YOURSELF

We suggest using a good quality exterior stain (if used outdoors) that is breathable. We use and offer PPG ProLuxe Cetol SRD RE made exclusively for wood siding and log sided homes. There are other products that work well, just make sure they are compatible with wood siding. Call the manufacturer or visit their web page for specific information.



FINISHING INFORMATION

Preparation: Inspect the siding to make sure it is ready to accept a stain. Make sure it is clean and free from mill glaze. Follow the preparation instructions on the stain container according to the manufacturer's recommendations. If a cleaner or power washer is used, rinse thoroughly and allow adequate drying time before applying any stain. A moisture meter is an excellent way to test the moisture content of your siding to achieve the best results. Some stains won't work well if the siding has not had time to dry after washing.

Western Red Cedar: All WRC products should be cleaned with a cleaner prior to staining to remove tannin stains that naturally develop on untreated cedar. Rinse thoroughly. A wood brightener is the final necessary step following cleaning to restore original color.

Stain Choice: DO NOT SEAL the siding with any sealer like varnish or polyurethane. Any moisture trapped inside will come out through the sealer, causing it to peel or crack (remember even kiln dried only means less than 15% moisture). Do Not Paint, as paint is a sealer.

Application: Stir well before use and occasionally during use. Test a small area first before coating the entire project. Apply the product at the acceptable temperatures listed on the container, usually above 50°F and below 95°F. Product will not penetrate properly if the temperature is too high or too low. Do not apply if the wood is hot to the touch or rain is imminent.

Coverage: PPG ProLuxe SRD RE: 200 – 300 square feet/gallon on previously stained wood, 125-200 square feet/gallon on new wood. **Organiclear:** 200-400 square feet/gallon.

How often will I have to re-stain? The exterior of the home will need to be re-stained every 3–5 years. This varies due to sunlight and the tint of the stain. If the home is shaded, expect longevity. If there are little or no trees, it may be every 2–3 years, especially on the south side of the home where the sun will bleach the stain. The aforementioned time frames are merely estimates, always follow stain manufacturer's guidelines.

CAULKING

It is not necessary to caulk in between rows or where the siding butts together. Caulk around all windows and doors, and where the siding meets corner pieces. If full tail corners are used, caulk all joints around full tail corner pieces.

CHINKING

Chinking is a caulk-mortar compound used for chinking full log homes and our 4.5x9 half log. It is not needed for most log sided homes. If you are in need of additional information about chinking products please call 800-657-4666.

MAINTENANCE PRODUCTS



1-800-657-4666

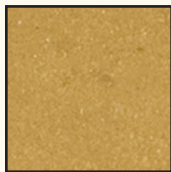
CAULK

Available by the case.

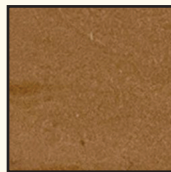
10.5 ounce tubes (12 per case)

30 ounce tubes (10 per case)

Colors:



Tan



Woodtone

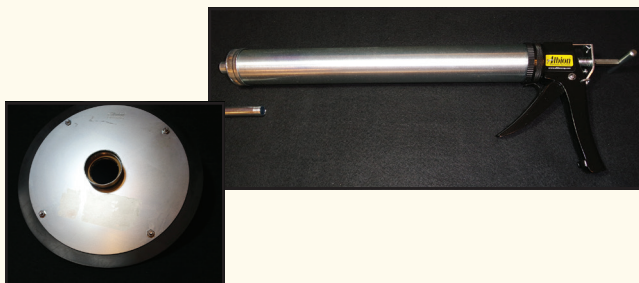


Dark Brown

LOG BUILDER	VENDOR PART NUMBER
Tan—10.5 oz	5020021001
Woodtone—10.5 oz	5020021002
Dark Brown—10.5 oz	5020021003
Tan—30 oz	5020022901
Woodtone—30 oz	5020022902
Dark Brown—30 oz	5020022903

CHINKING GUN & FOLLOW PLATE

For use with 5-gallon pails of Chinking.
Make loading easier with a follow plate.

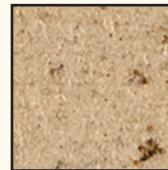


CHINKING

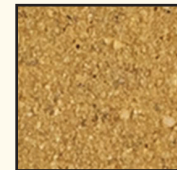
30 ounce tubes (10 per Case)

5 gallon buckets

Colors:



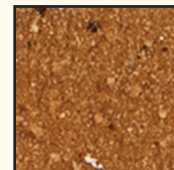
Buff



Tan



Mortar White



Woodtone
Cedar



Dark Brown

LOG JAM	VENDOR PART NUMBER
Tan—30 oz	5020012901
Woodtone Cedar—30 oz	5020012902
Buff—30 oz	5020012903
Mortar White—30 oz	5020012904
Dark Brown—30 oz	5020012905
Tan—5 Gallon	5020010501
Woodtone Cedar—5 Gallon	5020010502
Buff—5 Gallon	5020010503
Mortar White—5 Gallon	5020010504
Dark Brown—5 Gallon	5020010505



1-800-657-4666

MAINTENANCE PRODUCTS

X180 WOOD RESTORER / LOG CLEANER

Available in 1 gallon concentrated pails. Coverage: 150 to 250 sq. ft. per gallon when diluted according to instructions (yielding 1,000 sq ft per pail). Will vary depending on the porosity and texture of the wood.



PRODUCT	VENDOR PART NUMBER
X180	5990050102

SIDING STAIN

PPG ProLuxe SRD RE is used for our Prefinish, but also sold separately. Available in 1 or 5 gallon buckets. See page H1 for colors.



PPG PROLUXE SIDING STAIN	VENDOR PART NUMBER	SIZE
Natural	5040001078	1 Gallon
Cedar	5040001077	1 Gallon
Dark Oak	5040001009	1 Gallon
Mahogany	5040001045	1 Gallon
Natural	5040000078	5 Gallon
Cedar	5040000077	5 Gallon
Dark Oak	5040000009	5 Gallon
Mahogany	5040000045	1 Gallon

FULL LOG STAIN*

Organiclear allows wood to "breathe" naturally. Due to varying applications and wood conditions, allow 200-400 square feet per gallon.

*This is not the same product as used with our prefinishing, but can be used over the top of PPG SRD RE or other oil base stains.

ORGANICLEAR IWF	VENDOR PART NUMBER	SIZE
Clear	5010010101	1 Gallon Interior
Honey	5010010102	1 Gallon Interior
Clear	5010010501	5 Gallon Interior
Honey	5010010502	5 Gallon Interior



ORGANICLEAR WR5	VENDOR PART NUMBER	SIZE
Ivory	5010050103	1 Gallon Exterior
Honey	5010050102	1 Gallon Exterior
Golden Oak	5010050104	1 Gallon Exterior
Chestnut	5010050105	1 Gallon Exterior
Ivory	5010050503	5 Gallon Exterior
Honey	5010050502	5 Gallon Exterior
Golden Oak	5010050504	5 Gallon Exterior
Chestnut	50100505045	5 Gallon Exterior